



AmericanDoor.com



(888) 226-3667  
(631) 586-8006  
(718) 895-6136

# Super Insulated Overhead Door

Model AM850 Advanced Performance Sectional Door



## Your Energy Stronghold

If thermal performance matters in your facility, the AM850 Super Insulated Overhead Door with 150% thicker panels and foamed-in-place insulation is your hands-down winner. It includes a header seal, continuous hinge strips, a dual-durometer bulb seal, and pvc thermal breaks on the end stiles.

With a whopping R value of 26, our model AM850 Super Insulated Overhead Door bosses hot and cold for your facility. It is available in a wide variety of sizes, and has many safety systems and other options to choose from, including insulated lites and exhaust vents.

>> 3" Thick Panels

>> Dual-Barrier Joints

>> R-Value 26

>> Optional:  
Enhanced Thermal  
Performance Jamb  
Seal

**AmericanDoor.com**

**(631) 586-8006 (718) 895-6136**

9 LUCON DR, DEER PARK, NY 11729

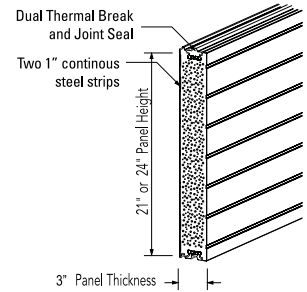
## STANDARD FEATURES OVERVIEW

### CONSTRUCTION

<b>MAX HEIGHT</b>	24'1" (7.3 meters)
<b>MAX WIDTH</b>	40'2" (12.2 meters)
<b>NOMINAL THICKNESS</b>	3" (76 mm)
<b>EXTERIOR STEEL</b>	28 Gauge Micro-grooved Steel
<b>R-VALUE</b>	26
<b>U-VALUE</b>	.038 (.22 W/K M <sup>2</sup> )
<b>INSTALLED U-FACTOR</b>	.14 btu/hr * ft <sup>2</sup> * F <sup>0</sup> (.80W/m <sup>2</sup> )
<b>STC RATING</b>	Class 22
<b>AIR INFILTRATION</b>	.09 cfm/ft <sup>2</sup> (at 15mph or 24kmph)
<b>IECC</b>	Meets Requirements for U-Factor and air Infiltration
<b>SPRINGS</b>	10k Cycles (optional 25k, 50k, 100k cycle)
<b>THERMAL BREAK</b>	1 3/4" Wide PVC Thermal Break on End Stiles
<b>JOINT PROFILE</b>	Dual barrier tongue-in-groove
<b>PERIMETER PROTECTION</b>	Header Seal; Bottom Weather Seal; Dual-Durometer PVC Bulb Seal
<b>HINGE STRIPS</b>	Steel strips at top and bottom of sections

### Options:

Safety Systems; Large Thermal Lites; Insulated Lites; Window Options; Exhaust Ports; High-Cycle Springs; High-Use Components; Pass Doors (Wicker Doors); Electric Operator; Cable Failure Device; Enhanced Thermal Performance Jamb Seal; EPDM Outer Bulb Seal (recommended for extreme conditions).



Micro-grooved Texture



**Optional:**  
Exhaust Port



**Optional:**  
Large Lites 25" x13"



**Optional:**  
Insulated Lites 24" x 6"



**AmericanDoor.com**  
**(631) 586-8006 (718) 895-6136**

9 LUCON DR, DEER PARK, NY 11729





**Special Insulation Features:**



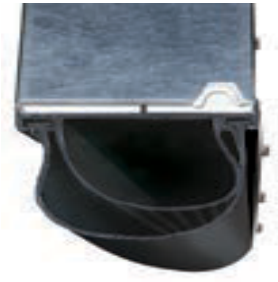
**Panel:**  
3" Thick foamed-in-place polyurethane



**End Stiles:**  
PVC Thermal Break



**Joints:**  
Double Barrier Tongue and Groove

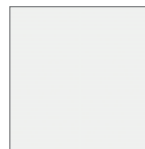


**Bottom Weatherseal:**  
Double Durometer PVC Bulb Seal



**Optional:**  
Enhanced Thermal Performance Jamb Seal

**Standard Color Choices:**



**White**



**Brown**



**Almond**



**Taupe**

**Powder Coat Options:**



**AmericanDoor.com**  
**(631) 586-8006 (718) 895-6136**

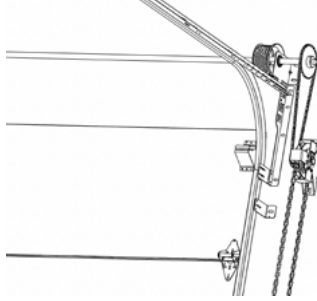
9 LUCON DR, DEER PARK, NY 11729



## Operational Options:



**Push-up:** For light doors. Easy on the pocketbook.

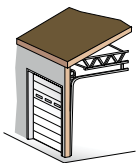


**Chain Hoist:** Manual assistance for heavier panel doors.

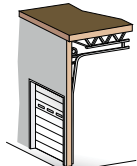


**Electric Motor:** Convenience and ease of use.

## Track Mounting Options:

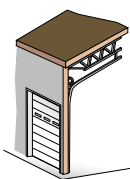


**Standard Lift**



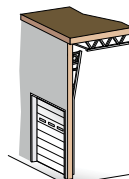
**High Lift**

Break-away is standard. Straight incline is available.



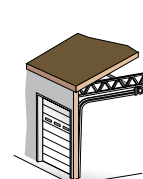
**Roof Pitch**

Standard or High Lift.



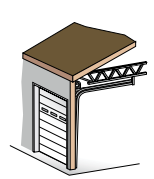
**Vertical Lift**

Break-away is standard. Straight incline is available.



**Low Headroom**

Rear mount torsion



**Low Headroom**

Front mount torsion

## Some Safety and Security Systems Options for Motorized Doors:

**Photo Eye**

Detects people and vehicles passing the eye

**Safety Edge**

Detects the door closing on an object

**Push Button Control**

Station to control the door

**Key Switch Control**

Restricted access control

**In-Ground Loop**

Senses vehicles approaching

**Timer**

Scheduled operation of the door

**Radio Remote**

Remotely operate the door

**Horn**

Alerts bystanders that door is in operation

**Strobe Light**

Alerts bystanders that door is in operation

**Key Card**

Electronic card access

and more...

We'll be happy to assist you with all of your security door needs. Just call



**AmericanDoor.com**  
**(631) 586-8006 (718) 895-6136**

9 LUCON DR, DEER PARK, NY 11729

