

521

ALUMINUM DOOR SYSTEMS

Americandoor.com

ALUMINUM SECTIONAL DOORS





Model 511, Brown powder coat finish, Clear glass

General features and benefits – Models 511/521

- 1 3/4" (45 mm) thick, corrosion-resistant 6063-T6 aluminum sections with galvanized fixtures and hinges promotes durability and trouble-free operation
- 1/4" (6 mm) diameter through-rods on all stiles and rails enhances strength and sturdiness
- Top-quality materials, excellent field service and optional maintenance program contribute to extended door life, low maintenance costs and maximum productivity
- Glazing choices include DSB glass, acrylic, tempered glass, clear polycarbonate, multi-wall polycarbonate, wire glass, Low E, Lexan and laminate
- Standard clear anodized finish for low-maintenance and corrosion-resistance
- Optional finishes include a wide range of powder coat colors offering an attractive and durable finish
- Manual pull rope operation with optional chain hoist or electric motor operator
- Available in approximately 200 RAL powder coat colors to match the aesthetic and design of your project. This color optional upgrade includes a hardening additive that provides an attractive and durable finish and easy-to-clean surface.

Cover image: Model 521, Clear anodized finish with Clear glass.

Glass options for Models 511/521

Specialty Glass

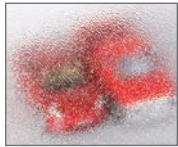
- Laminated White – privacy
- Low E Glass** – thermal efficiency
- Tempered Glass – enhanced safety
- Tinted Glass** – color options:
Green, Gray, Bronze

Glass alternatives

- Clear Lexan® Polycarbonate** – shatter resistant
- Multi Wall Polycarbonate – superior strength with UV protection; color options: Clear, White, Bronze
- Plexiglas® Acrylic** – shatter resistant
- Impact Clear and Frosted Polycarbonate - 0.250" minimum



Double Strength DSB** (Standard)



Obscure



Satin Etched



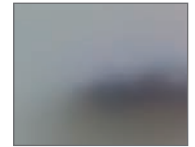
Gray Tint



Green Tint



Bronze Tint



Impact Frosted Polycarbonate

Actual glass may vary from brochure photos due to fluctuations in the printing process. Check with your Distributor to view a glass sample.

** Insulated options available.



Model 511, Clear Anodized finish with Clear glass

ALUMINUM DOOR SYSTEMS MODEL 521

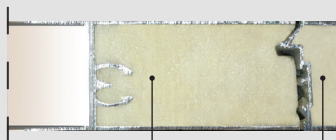
is appropriate for environments where maximum light infiltration and/or visual access is required. Designed to fit openings up to 26'2" (7976 mm) wide and 20'1" (6121 mm) high, the 521 Model features a wide, 2 11/16" (68 mm) center stile, a 2 3/8" (60 mm) or 3 3/4" (95 mm) top rail, and 3 3/4" (95 mm) or 4 1/2" (114 mm) bottom rail. A variety of glazing choices, finishes and special options are available.



Model 521, Knotty Pine wood grain finish and Satin Etched glass.

Optional polyurethane insulation for stiles and rails up to 18'2" wide

1/2" insulated glazing unit	Door R-value (K m ² /W)
DSB- clear, tempered, obscure	2.87
Clear polycarbonate	2.93
DSB - Solar Bronze	3.17
DSB - Low E coating	3.43
SolarBan 70XL argon filled	4.09
Multi-wall polycarbonate	Door R-value (K m ² /W)
1/4" thick unit	2.75
3/8" thick unit	3.21
5/8" thick unit	3.48
Insulated panels	Door R-value (K m ² /W)
3/8" EPS solid panels	2.60



Polyurethane filled rails and stiles



Standard features at a glance

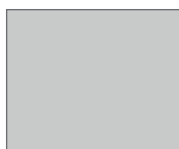
Section thickness	1 3/4" (45 mm)
Maximum standard width	26'2" (7976 mm)
Maximum standard height	20'1" (6121 mm)
Material	Extruded 6061-T6 aluminum
Standard finish	204R-1 clear anodized (painted white at no charge)
Center stile width	2 11/16" (68 mm)
End stile width	3 5/16" (85 mm)
Top rail width	2 3/8" (60 mm) or 3 3/4" (95 mm)
Top intermediate rail width	2 1/8" (54 mm)
Bottom intermediate rail width	1 19/32" (40 mm)
Bottom rail width	3 3/4" (95 mm) or 4 1/2" (114 mm)
Weatherseals	Bottom, flexible PVC
Standard springs	10,000 cycle
Track	2" (51 mm)
Mounting	Angle
Operation	Manual pull rope
Hinges and fixtures	Galvanized steel
Lock	Galvanized, interior-mounted single unit
Warranty	12-month limited; 3-year powder coat finish

Options

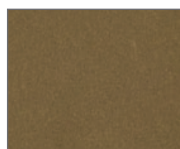
Glazing options†: 1/8" (3 mm) DSB; 1/8" (3 mm) or 1/4" (6 mm) acrylic; 1/8" (3 mm) or 1/4" (6 mm) tempered; 1/8" (3 mm) or 1/4" (6 mm) clear polycarbonate; 1/4" (6mm) and 3/8" twin-wall polycarbonate, 5/8" triple-wall polycarbonate; 1/4" (6 mm) 3/8" (10 mm) and 5/8" (16 mm) twin-wall polycarbonate, triple-wall polycarbonate 1/4" (6 mm) wire glass; 1/2" (12 mm) insulated glass
Electric operator or chain hoist
Bottom sensing edge
3" track
Bracket mounting (not available on full vertical door tracks)
Higher-cycle springs in 25k, 50k, 75k, 100k cycles
Exhaust ports
Four-section pass door
Wind load and impact rated door available
Posi-tension drums
Bronze anodization
Powder coat finish
Pass door

Structure options

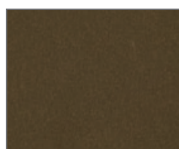
Anodized finishes



Clear (standard)



Light Bronze



Medium Bronze



Dark Bronze

Painted finishes



White (standard)

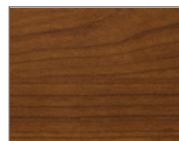
Wood grain powder coat finishes



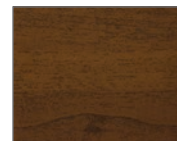
Knotty Pine



Cherry



Cherry with Flame



Dark Walnut

Powder coat finishes

Select from approximately 200 RAL powder coat color options to best match your home.



Actual door colors may vary from brochure photos due to fluctuations in the printing process. Always request a color sample from your Distributor for accurate color matching.

Panel schedule		Section schedule	
Door width	Number of panels	Door height	Number of sections
to 9'2" (to 2794 mm)	2 or 3 (standard)	to 8'6" (2591 mm)	4
9'3" to 12'2" (2819 mm to 3708 mm)	3	8'7" to 10'1" (2616 mm to 3073 mm)	5
12'3" to 16'2" (3734 mm to 4953 mm)	4	10'2" to 12'1" (3099 mm to 3683 mm)	6
16'3" to 18'2" (4978 mm to 5537 mm)	4 or 5 (standard)	12'2" to 14'1" (3708 mm to 4293 mm)	7
18'3" to 19'2" (5562 mm to 5842 mm)	5	14'2" to 16'1" (4318 mm to 4902 mm)	8
19'3" to 20'11" (5867 mm to 6375 mm)	6**	16'2" to 18'1" (4928 mm to 5512 mm)	9
21'0" to 23'11" (6401 mm to 7290 mm)	8**	18'2" to 20'1" (5537 mm to 6121 mm)	10
24'0" to 26'2" (7315 mm to 7976 mm)	10**		



About

Complementing its 24-hour emergency service American Door maintains its own overhead door manufacturing plant and parts warehouse. This enables American Door to quickly and efficiently resolve all point-of-entrance security issues. In most cases our customers find that their emergencies receive a response within two hours and most repairs are complete the next business day. American Door can even ship hard to get door parts.

For almost fifty years, thousands of customers in the New York Metro area have relied on American Door for the highest quality door products and conciliary products ranging from dock levelers, impact doors, fire personnel doors and hardware. Adapting to the changing marketplace, American Door continues to provide professional services to many of its long-time customers who have chosen to centralize facility maintenance in house or with an outside single source provider.



Americandoor.com
9 Lucon Drive Deer Park NY, 11729
(718)-895-6136
(631)-586-8006
Fax:(631)-586-8074